



Magneto-resistive Sensors

Series 300 • 10 - PNP

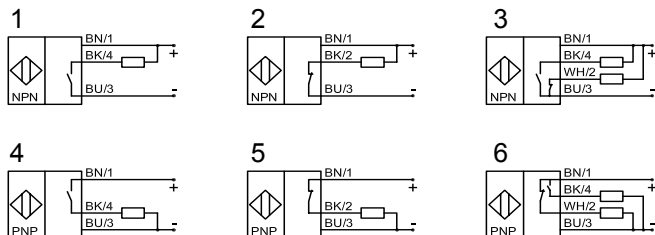
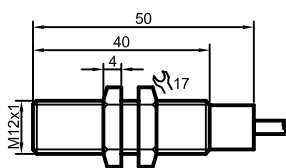
- Housing M12 x 1
- Housing material: Stainless steel VA
- Sensing distance S_n 1.5 mm

Certificate:



Technical data	Flush mountable
Operating distance S_n	1.5 mm
Electrical version	3-wire DC
Output	NO
Type NPN	
Art.-No.	
Connection diagram No.	
Type PNP	MRS-300-M12-10-S
Art.-No.	MR 0001
Connection diagram No.	4
Operating voltage (U_B)	10...35 V DC
Output current max. (I_o)	250 mA
Voltage drop max. (U_d)	≤ 2.5 V
Permitted residual ripple max.	10 %
No-load current (I_o)	Typ. 15 mA
Frequency of operating cycles min. / max.	0.5 Hz / 10 kHz
Permitted ambient temperature	-40...+125 °C
LED-display	Yellow
Protective circuit	Built-in
Degree of protection IEC 60529	IP 67
Norm	EN 60947-5-2
Connection cable	5 m, silicone, 3 x 0.34 mm ²
Housing material	VA No. 1.4305
Active surface	VA No. 1.4305
Lid	PEEK (FDA 21 CFR 177.2415)

All specifications are subject to change without notice. (01.09.2010)



Made in Germany